

Modular Dock System Type G1000

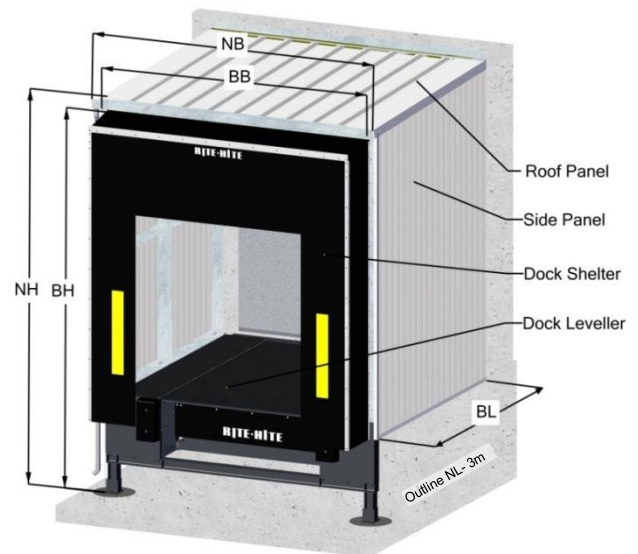
Single Arrangement/Row Arrangement/Saw-tooth Arrangement

NB Nominal width
 NH Nominal height
 BB Construction width
 BL Construction length
 BH Construction height

Dimensions (mm):					
NB	BB	NH	BH ^a	NL ^b	BL
3500	3420	4730	4660	2000 - 4500	NL + 50
a) Steel construction					
b) In size intervals 2000/2500/3000/3500/4000/4500mm					

Standard:

- Single arrangement 90°
- **Framework:** (base framing, standard RH=1200mm):
 - Steel frame substructure, zinc-plated
(steel frame substructure with connection to building, see foundation layout)
- **Sidewall and roof construction:**
 - Zinc-plated U-profiles
 - Building connection required
 - (according building connection plan, Rite-Hite GmbH)
 - ISO-side panel LL40, RAL 9002
(Sidewall 0,8 m above approach)
 - ISO-roof panel D70, RAL 9002
 - Roof slope, approx 3,5%
- Maximum wall offset 40mm can be covered, 45° arrangement, max. 20 offset can be covered (not applicable for portal frame)
- **Capacity:**
 - Dock leveller: 60 kN
 - Side platform: 5 kN/m² nominal load
- **Loads:**
 - Max. 3 kN/m² snow load on the roof, max. wind load of 0,65 kN/m² qp(z)
(execution to be provided by customer/sales)
- **Control box** (included in the delivery of the dock leveller):
 - Mounting position: inside
- **Support posts** (depending on U-channel length):
 - U200: ≥ 3420 mm, no additional supports required
 - U200: 2800-3420 mm, additional supports required
(side support brackets are provided for bolting, if bolting is not applicable, support posts/foundation is required-contact Rite-Hite GmbH)
 - U200: < 2800 mm, please contact Rite-Hite GmbH
- **Support posts for:**
 - For NL > 3000 mm, (see foundation layout)
- Water outlet on both sides via roof gutter
(roof gutter RAL 9002, without downpipe)
- **Pre-equipped for:**
 - Collapsible dock shelter: 3300/3600/600mm
 - Moulded dock bumpers: 250/500/140mm



Option:

- **Capacity:**
 - Dock leveller: 80kN, side platform 5kN/m² nominal load
 - Dock leveller: 100kN, side platform 5kN/m² nominal load
- Steel frame substructure: RAL 7016
(exclusion of the warranty on the paint)
- **Arrangement:**
 - Row arrangement: 90°
 - Single arrangement: 45° (up to 3000mm maximum length)
- **Offset modules:**
 - Usable for wall offset: 0-100mm
- **Portal frame:**
 - Required, if building connection is not applicable for upper structure (wall offset can't be covered)
- ISO-Panels with various RAL colours (on request)
- Downpipe, zinc-plated
- Roof gutter, zinc-plated
- **Loads:**
 - Max. 4,5 kN/m² snow load on the roof, max. wind load of 1,07 kN/m² qp(z)
(execution to be provided by customer/sales)
- **Moduls for dock shelters** (on request):
 - Collapsible dock shelter: 3500/3600/600mm
 - Inflatable dock shelter: 3400/3500/800mm or 3500/3500/800mm
 - Eclipse dock shelter: 3405/3365/660mm or 3505/3365/660mm
 - Eliminator Gapmaster: 3405/3290/585mm or 3505/3290/585mm
- Stepped design (stepped dock leveller required, see page 4):

Provided by others:

- Concrete foundation (see foundation plan Rite-Hite GmbH)
- Building connection upper structure (top)
(see building connection layout, Rite-Hite GmbH)
- U-200x 3420mm long, building connection, substructure
(see page 2)
- Drain profile (between building wall and modular dock system roof)

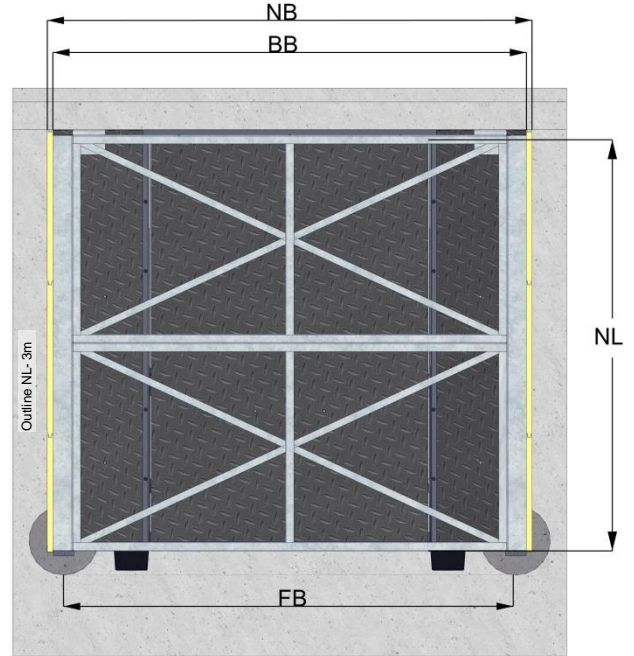
Project-related information:

Specifications subject to change without notice

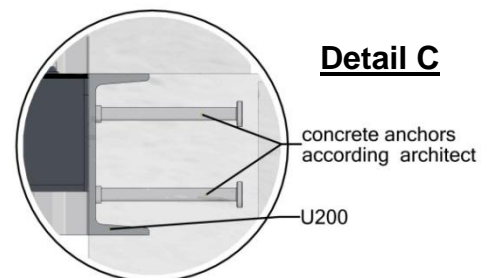
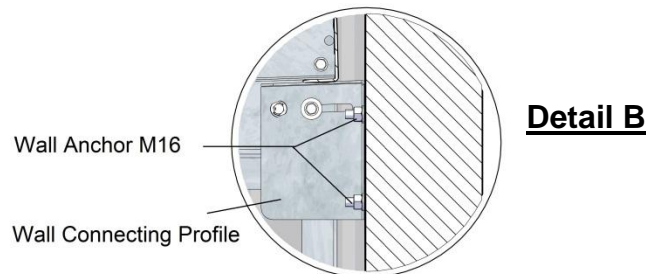
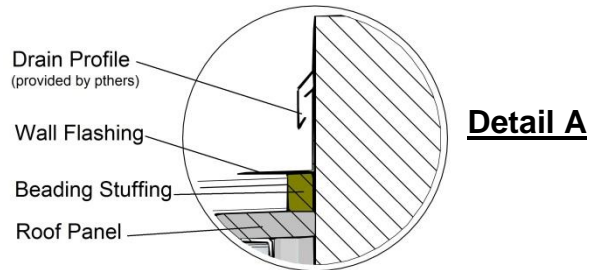
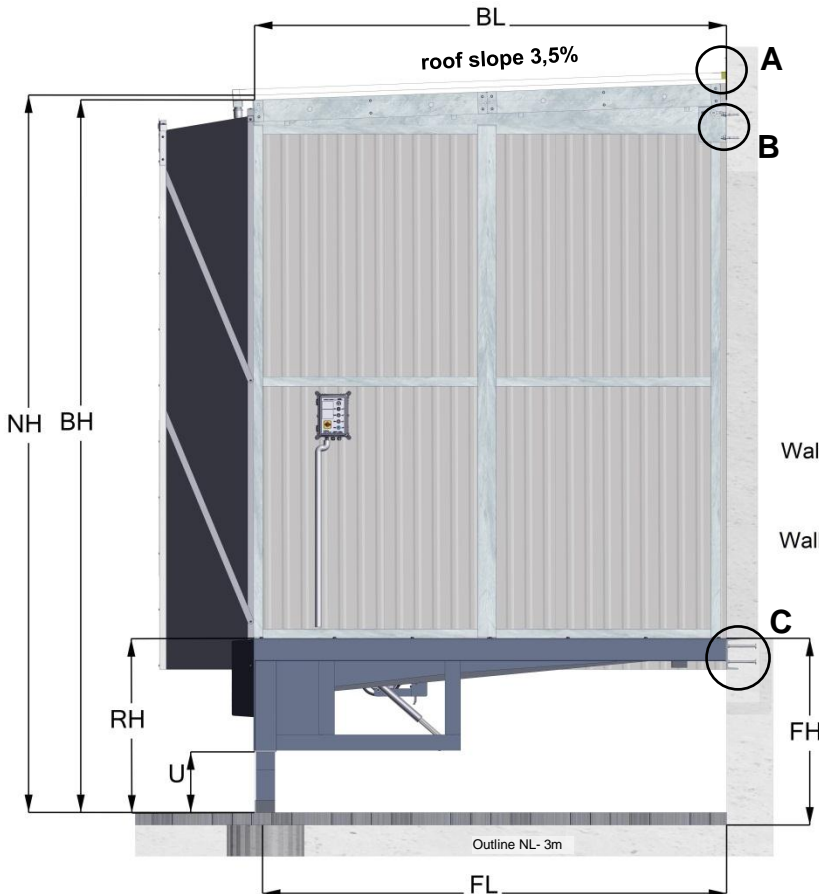
- NH Nominal height
- BB Construction width
- BL Construction length
- BH Construction height
- FB Axial distance foundation (width)
- FL Axial distance foundation (length)
- FH Foundation height
- NL Nominal length dock leveller
- RH Dock height
- WS Side panel thickness
- DS Roof panel thickness
- U Tailgate opening height

Dimensions (mm):			
NB	3500	FB	3265
BB	3420	FH	customer specification
NH	4730	FL	BL - 75
BH ^a	4660	WS	40
NL ^b	2000 - 4500	DS	70
BL	NL+50	RH	1200
Tailgate opening height U ^c for G8000-60kN at RH=1200mm We recommend a minimal height U= 350mm		Tailgate opening height U ^c for G9000-60kN at RH=1200mm We recommend a minimal height U= 350mm	
Nominal Length	Tailgate Opening Height	Nominal Length	Tailgate Opening Height
2000/2500/3000	450	2000/2500	450
3500/4500	350	3000	350
		3500	(250) na
		4000/4500	(170) na
a) Steel construction height			
b) In size intervals 2000/2500/3000/3500/4000/4500 mm			
c) Tailgate opening height depended on foundation height, dock height and nominal height of the dock leveller			

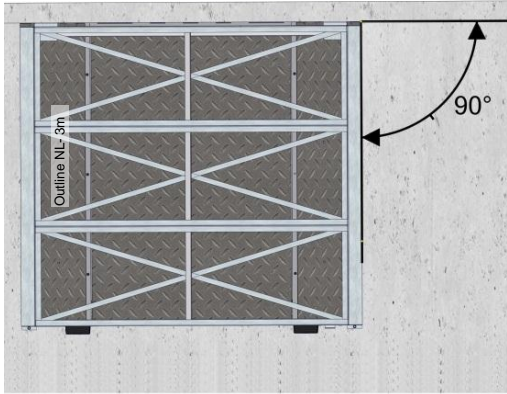
Top view (without roof panel and dock shelter)



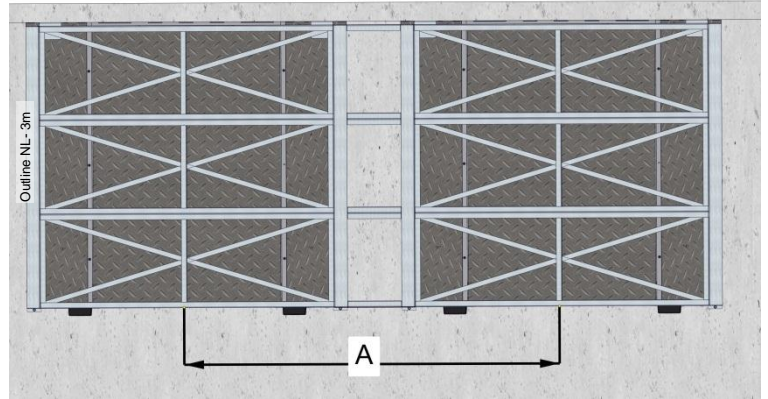
Side view in sectioning



Single Arrangement (90°)

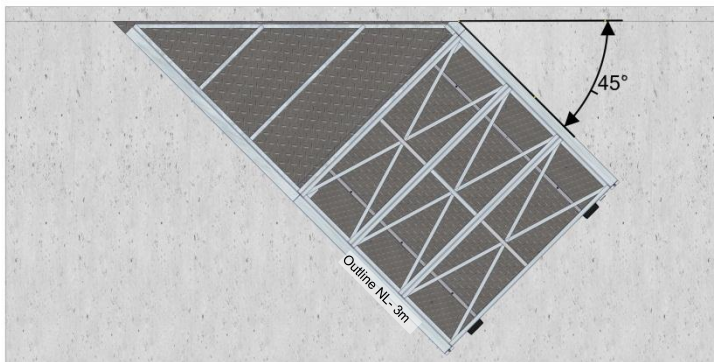


Row Arrangement (90°)



- maximum axial distance 4000mm
- No connection plateau between dock houses
- continuous roof construction with connection modules + ISO-panels

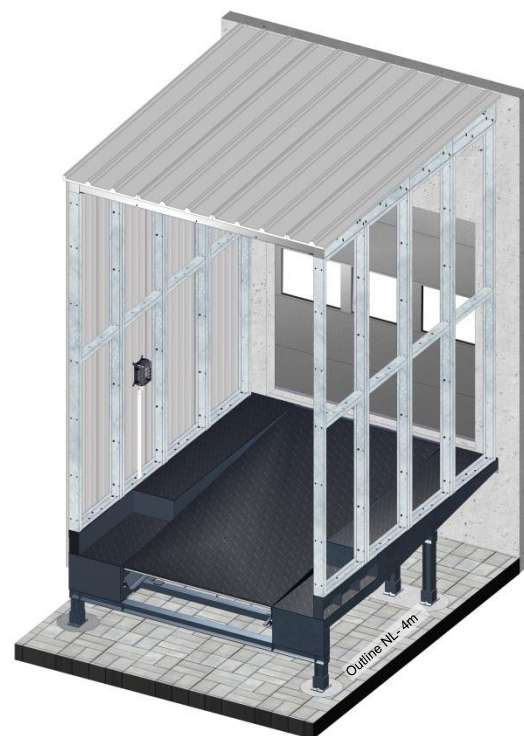
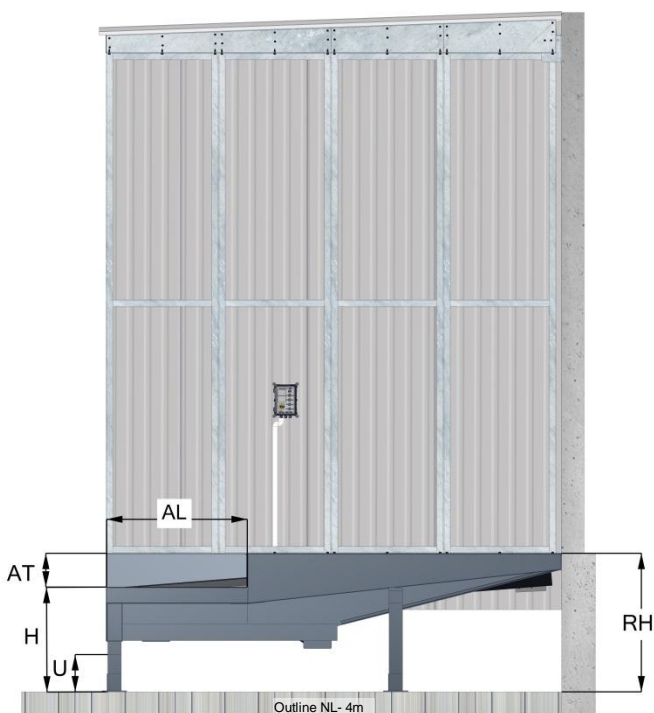
Single Arrangement (45°)



Stepped Modular Dock System

RH	Dock height	H	Height
AT	Stepped projection	U	Tailgate opening height
AL	Stepped length		

Dimensions (mm):			
RH	1200	H	900
AT	300	AL	1250
U	300 (at 60 kN & RH 1200mm)		



Platform in rest position in oblique position (*impassable*)

Standard equipment:

- **Stepped design** (only at **G9000** from a nominal length 3000mm available):
 - **Dimensions:**
 - Length = 1250 mm
 - Height = 300 mm (standard dimensions)
 - Capacity dock leveller: 60 kN
 - Capacity side platform: 5 kN/m² max. nominal load
 - Dock height= 1200 mm
 - **Dock leveller platform position:**
 - Rest position, is below the stepped edge (*oblique*)
- Safety devices: dock levellers with safety edges on both sides
- **Pre-equipped for:** (only for stepped modular dock systems):
 - Collapsible dock shelter: 3300/3900/600 mm (only for stepped modular dock systems)

Option:

- Capacity dock leveller: 80 kN (please contact Rite-Hite GmbH)
- **Arrangement:**
 - Row arrangement: 90°
 - Single arrangement: 45° (only until nominal length 3000mm) (on request, alignment left or right, layout design after receipt of order)
- Lift-dock bumper with gas compression spring (Recommendation)